

Arturo Brachetti

Technical Sheet for Convention



Arturo Brachetti - Technical Sheet Convention

LOCATION

The show can be represented in any theater, hall or congress room, as long as a “theatrical” situation can be created: stage, black dressing room, background, ring rig or rigging loft.

A technical verification or inspection is however mandatory. It is important for Arturo to receive as many information as possible regarding the location and its conformation.

The stage has to be available the day before the show for rehearsals and staging.

STAGE

The stage should be open on the front and covered on the two sides and on the back, with the audience facing the front side only.

Minimum length: 8-10 m. Minimum depth 6-8 m. Minimum stage floor height: 70-80 cm

Minimum overall height: 5m.

Proper climatization is required. Maximum temperature 18-20°C (64-68°F).

The stage should be a “black box“, with three covered sides and for wings.

We would need a curtain background to be mounted at 1.5 m distance from the back of the stage. In this way a hidden corridor can be created to be used by Arturo’s assistants.

Dressing rooms should be accessible from that corridor.

The stage floor should be dark. Black or dark gray moquette or dance mat.

Arturo Brachetti - Technical Sheet Convention

We request the presence of 4 porters for loading and unloading the material

It is necessary a fog machine for the opening, the finale and the ambient mist.

It is also necessary a 220V socket (or equivalent with adaptor for Italian sockets), on the front of the stage, where the sand art backlit table is positioned.

A stepladder to get on the stage from the front will be needed.

DRESSING ROOMS

2 closed dressing rooms close to the stage with backstage access will be necessary. The main dressing room, if possible, should be positioned as close as the backstage as possible.

A dressing room for costumes and equipment, at least 4x4m. A wide table for costumes preparation, a stand for the costumes, an electrical socket, a full figure mirror.

A dressing room for Arturo with make up table, mirror and light. A table and a couch for Arturo to rest on.

A dressing room for the technicians.

Toilets and shower nearby.

Arturo Brachetti - Technical Sheet Convention

LIGHTS

A good light design is a main show aspect to be taken care of to achieve a good result. A proper lights console should be programmed during the rehearsals on the day before the show or the same day.

- Mobile Spot Heads /LED WASH
- LED bars 100 cm
- Seguipersona 1500/2500

IMPORTANT

At least 3 hours are needed to program and store at least 50 light cues. It is mandatory for the light technician to know the hardware and software he's using. The troupe must possess a good theatrical experience and technical skills. These skills are absolutely necessary for the success of the show.

Arturo Brachetti - Technical Sheet Convention

AUDIO

- Intercom 4/6 canals (commesurate to the location) for direct communication with stage director (in must be Intercom RADIO)
- Sound system (commesurate to the location)
- Arturo uses his levalier microphone, "Countryman E6 Earset/DPA 4061" 3pin Lemo Connector; For Sennheiser 3000 & 5000/DPA connector.
- Two stage sound monitors

VIDEO

- Video projector FULL HD, adequate brightness
- HDMI video signal transport (A)
- Projection screen (A)
- HDMI signal transport from the stage to the operator console (over SDI, Ethernet or optical signal)

Digital switch-direction with inputs HDMI or SDI (A/B)

Alternatively: capture card (possibly Blackmagic Intensity Extreme) or equivalent

- LED WALL (B)

Arturo Brachetti - Technical Sheet Convention

SERVICES AND TECHNICAL REQUESTS

Lights, video and sound services are excluded from our supply.

ARTE BRACHETTI SUPPLIES

Stage prop trunk to be positioned at the centre of the stage

Backlit table for sand art performance

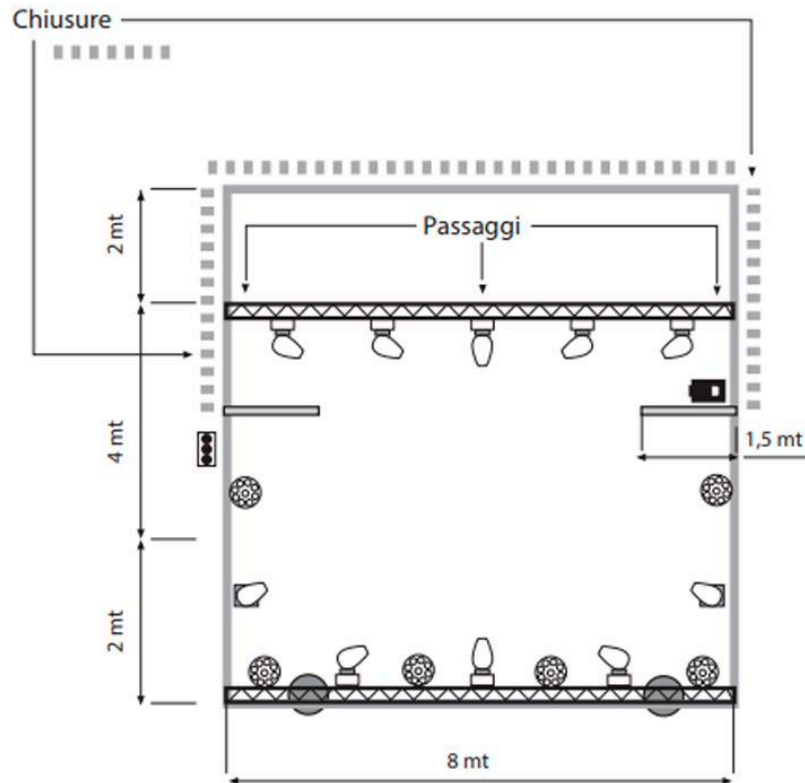
Full HD handheld camera with MINI HDMI output for sand art performance

TROUPE

Arte Brachetti's staff is composed of **8 people including Arturo**

Arturo Brachetti - Technical Sheet Stage A 1/4

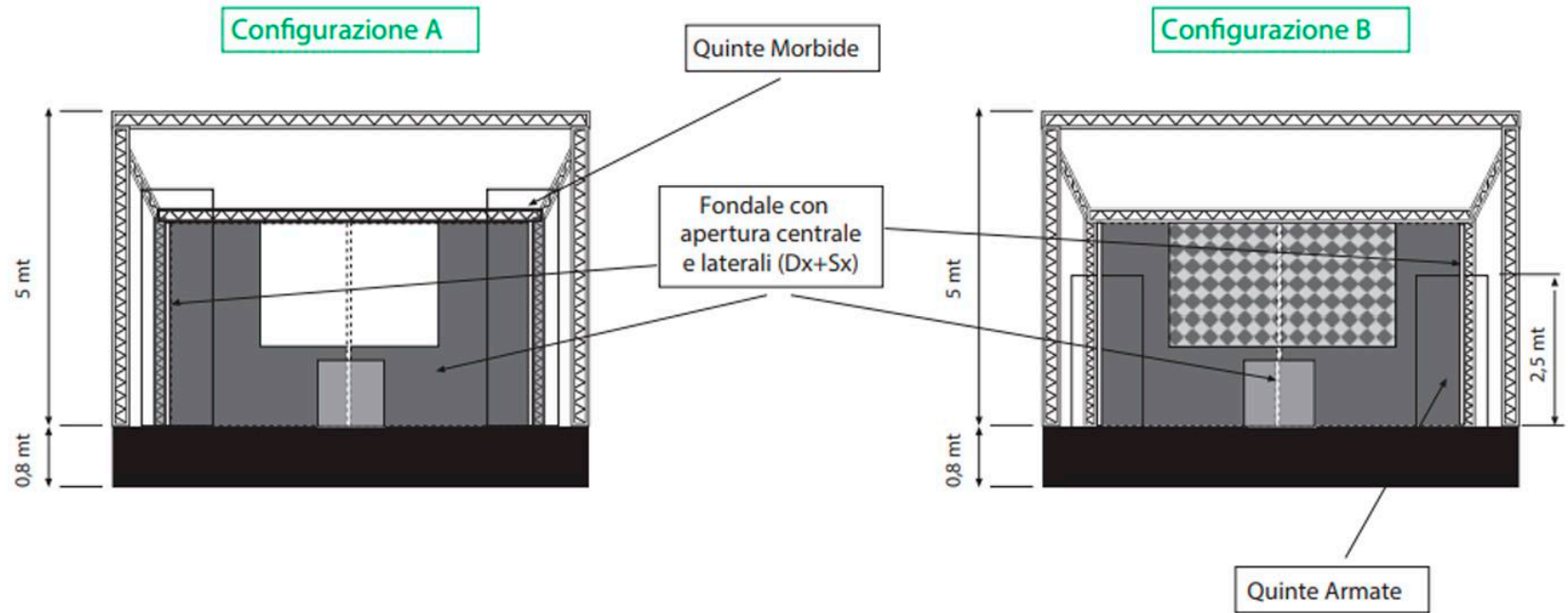
vista dall'alto



Indicative measures to be defined in a second moment

Arturo Brachetti - Technical Sheet Stage B 2/4

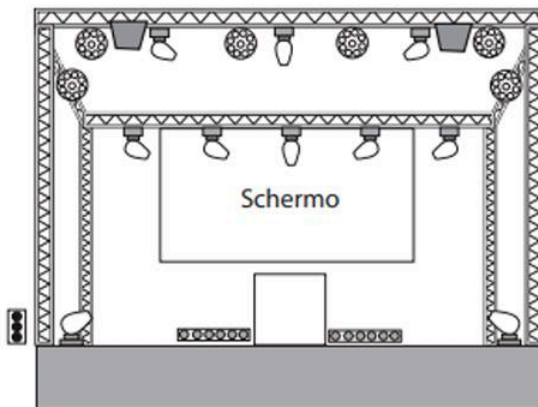
vista frontale



Arturo Brachetti - Technical Sheet Lights C 3/4

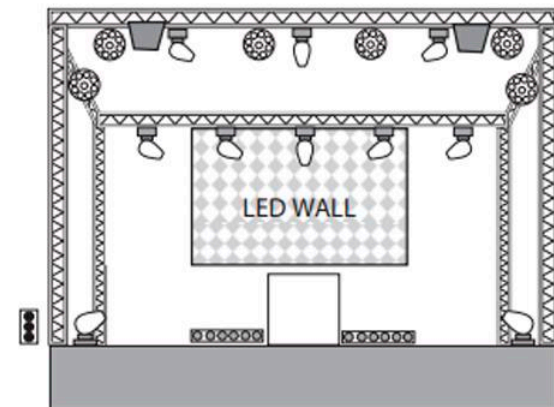
vista frontale

Configurazione A



-  Machine Neve (nostre)
no DMX da mettere
sotto Dimmer
-  LED WASH
-  SPOT
-  Presa AC 220
-  Barra LED

Configurazione B



Seguipersona
manuale

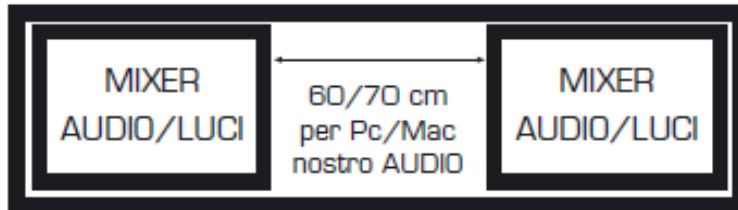


Seguipersona
manuale

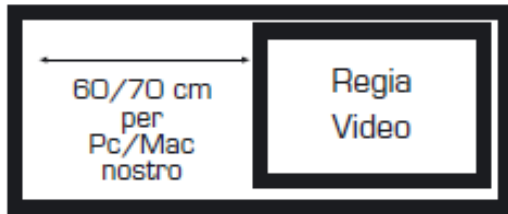


Arturo Brachetti - Technical Sheet 4/4

Direction



- Intercom 4/6 canals (commesurate to the location) for direct communication with stage director (in must be Intercom RADIO)



Stage Audio

- Sound system (commesurate to the location)
- Arturo uses his levalier microphone, "Countryman E6 Earset/DPA 4061" 3pin Lemo Connector, For Sennheiser 3000 & 5000/DPA connector.
- Two stage sound monitors

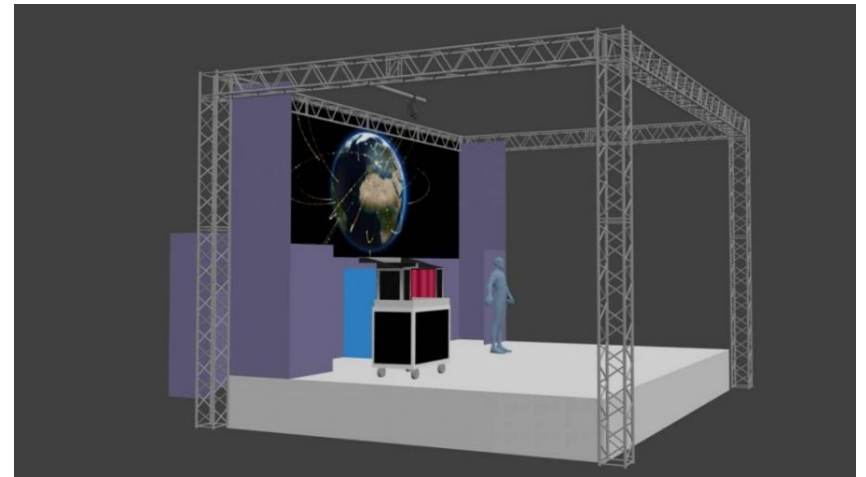
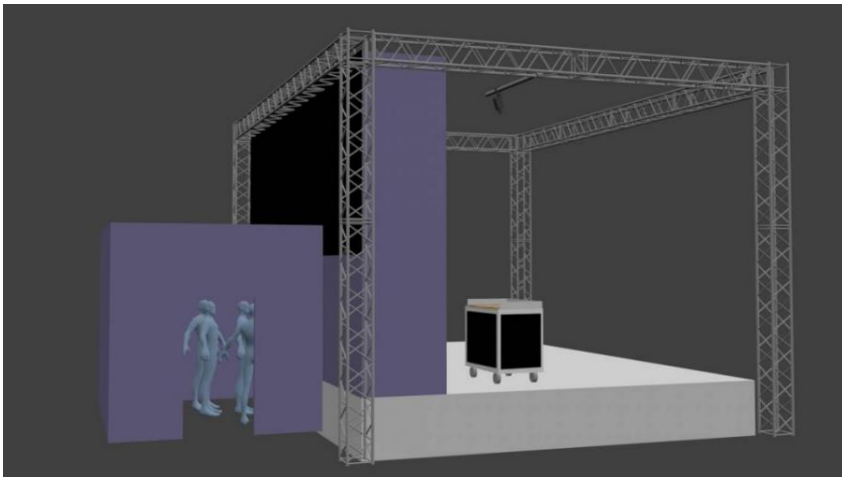
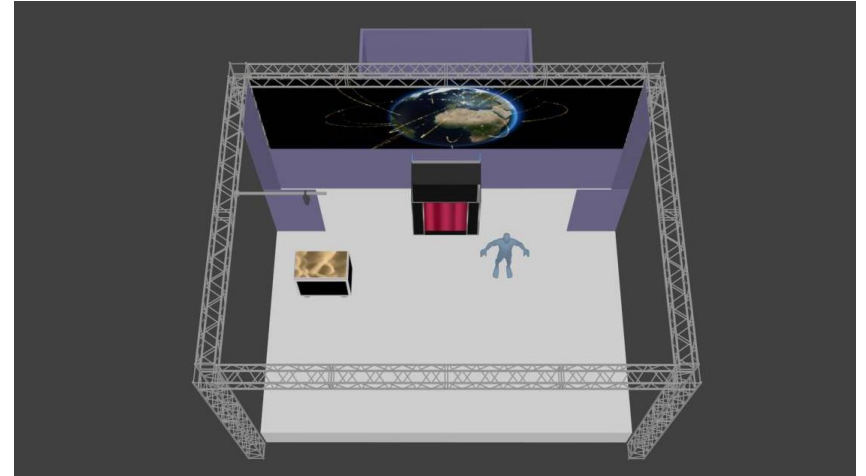
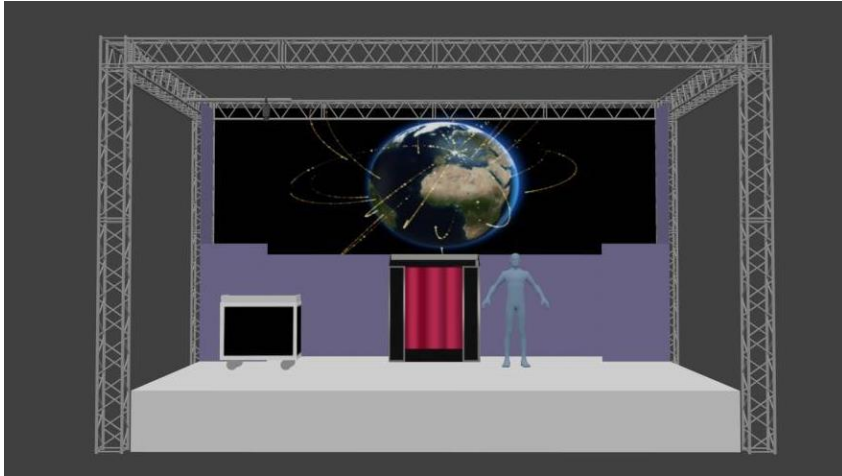
Summary Audio-Lights-Video

- Mobile Spot Heads/LED WASH
- LED bars 100 cm
- Seguipersona 1500/2500

- Sound system (commesurate to the location)
- Arturo uses his levalier microphone, "Countryman E6 Earset/DPA 4061" 3pin Lemo Connector, For Sennheiser 3000 & 5000/DPA connector.
- Two stage sound monitors
- Intercom 4/6 canals (commesurate to the location) for direct communication with stage director (in must be Intercom RADIO)

- Video projector FULL HD, adequate brightness
- HDMI video signal transport (A)
- Projection screen (A)
- HDMI signal transport from the stage to the operator console (over SDI, Ethernet or optical signal) Digital switch-direction with inputs HDMI or SDI (A/B) Alternatively: capture card (possibly Blackmagic Intensity Extreme) or equivalent
- LED WALL (B)

Arturo Brachetti – Example of a Stage



CONTACTS

ERWIN STEINER

+39 349 672 4327

tech@artebrachetti.it

GIORGIO BRACHETTI

+39 335 5761623

giorgio@brachetti.com

